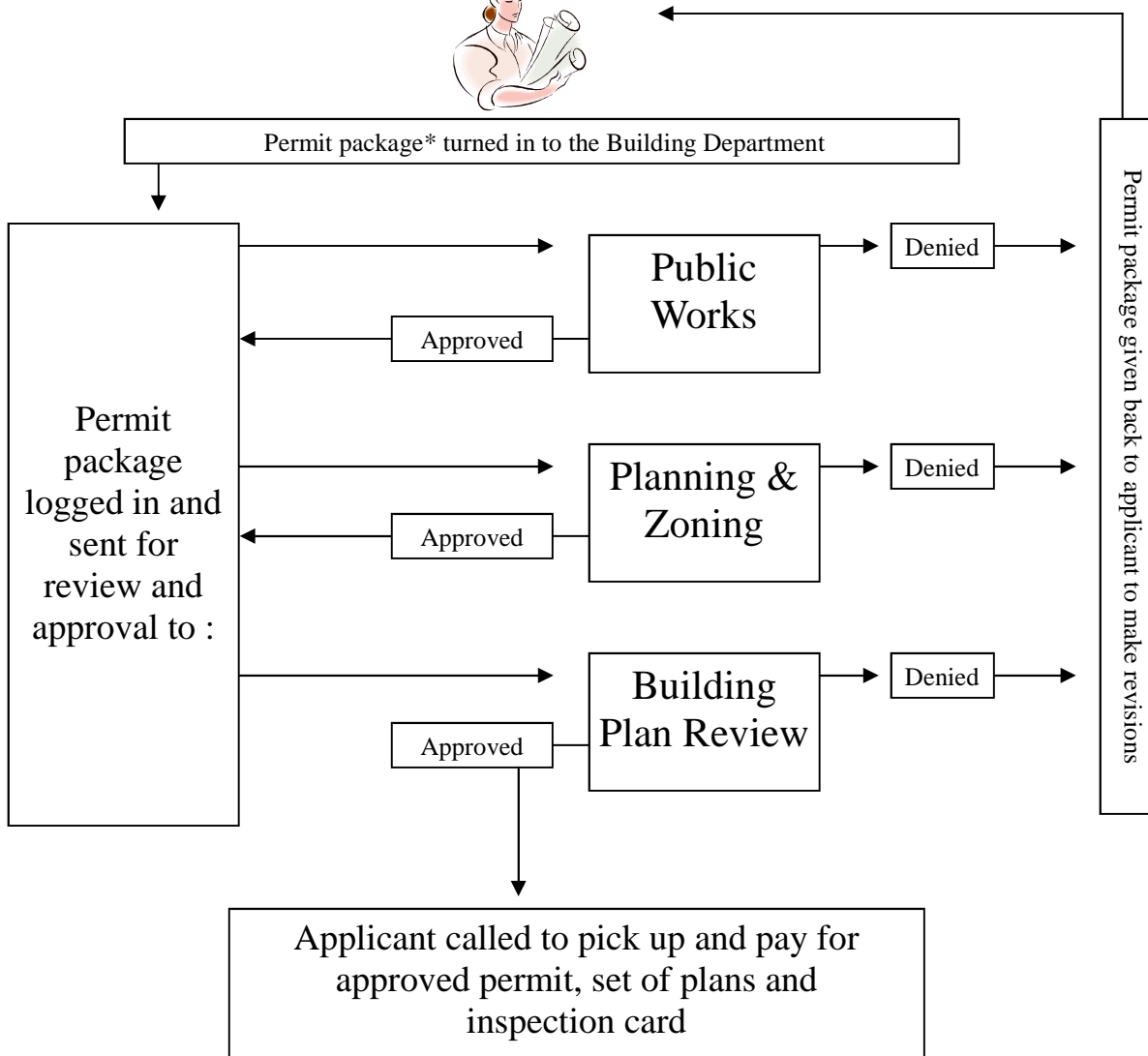




Pool/Spa Permit Process

10 to 21 business days



*** Permit Package includes but is not limited to:**

1. 2 site plans showing location of pool/spa from property lines and structures
2. 1 soils report (Pad certification) which must be wet-stamped by Nevada Engineer
3. Manufacturer information on pool/spa type (Prefabricated pool/spa)
4. 2 sets of structural calculation (Gunitite pool/spa)
5. 1 signed permit application
6. Initial \$ 40.00 submittal fee

*A Recorded Permission to Occupy Easement Form must be submitted if encroaching in a setback