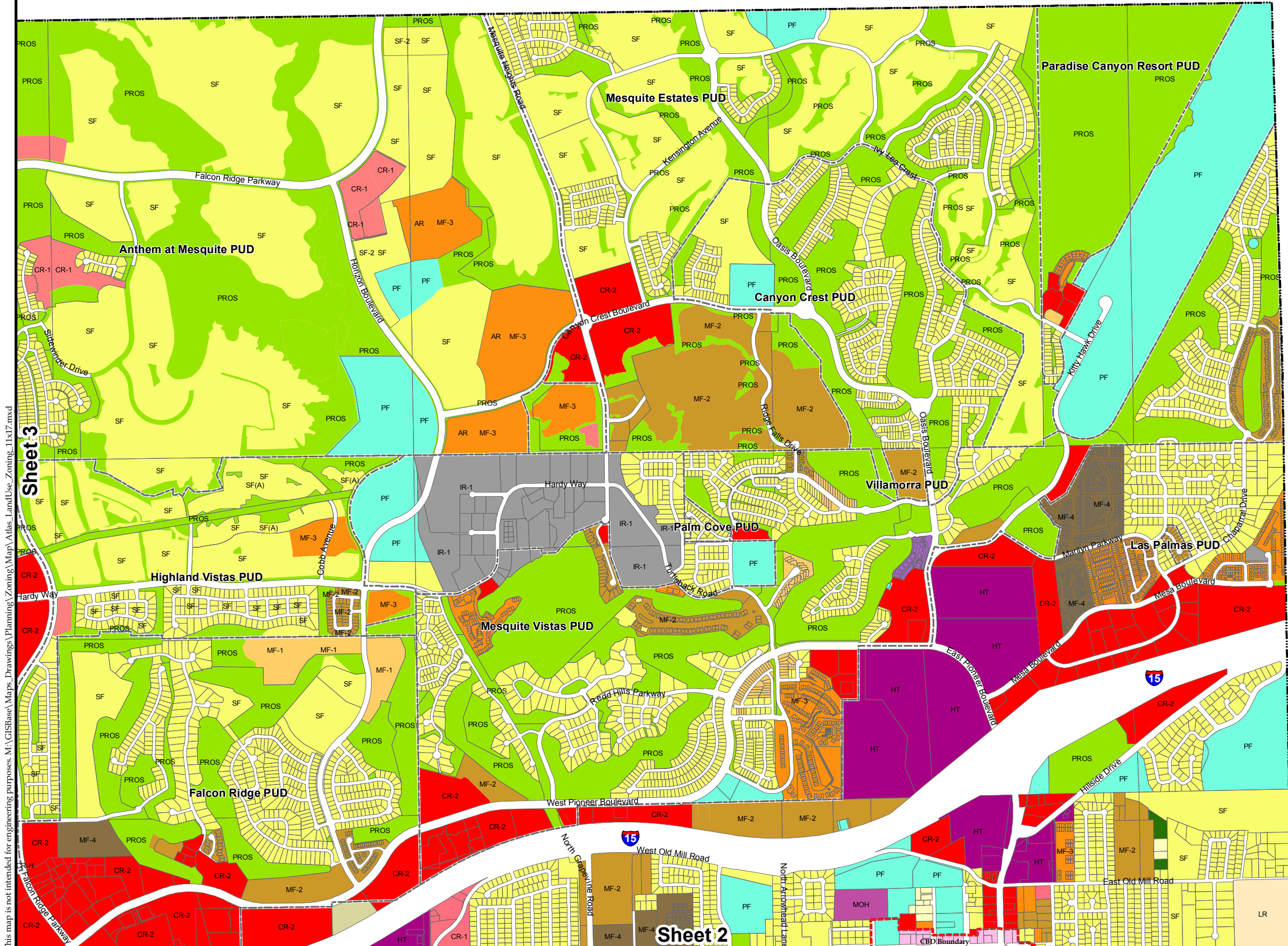


This map is not intended for engineering purposes. M:\GISBase\Maps Drawings\Planning\Zoning\Map Atlas LandUse Zoning_11x17.mxd



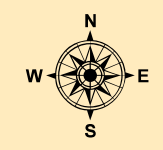
Legend

- Professional/ Business Office (PB)
- Commercial - Neighborhood (CR-1)
- Commercial - General (CR-2)
- Commercial - Central Business District (CR-3)
- Commercial - Auto Mall (CR-4)
- Commercial - Hospital Services (CR-H)
- Hotel/ Tourist (HT)
- Agriculture (A)
- Rural Ranch (RE-1)
- Rural Estates (RE-2)
- Rural Residential (RE-3)
- Single Family Residential (SF)
- Multi-Family - Attached Housing (MF-1)
- Multi-Family - Low Density (MF-2)
- Multi-Family - Medium Density (MF-3)
- Multi-Family - High Density (MF-4)
- Planned Unit Development (PUD)
- Manufactured Housing (MH)
- Mobile Home Special District (M-H)
- RV / Motor Home (RV)
- Industrial - Light (IR-1)
- Industrial - Heavy (IR-2)
- Public Facility (PF)
- Parks, Recreation and Open Space (PROS)
- Land Reserve (LR)

Map Scale



11x17 original size - 1 inch equals 1,500 feet
Use bar scale if map is reduced or enlarged



Sheet 1 of 6

**City of Mesquite Master Plan
Land Use and Zoning Map
May 25, 2010
Figure 1-1b
Page 21**

Sheet 2