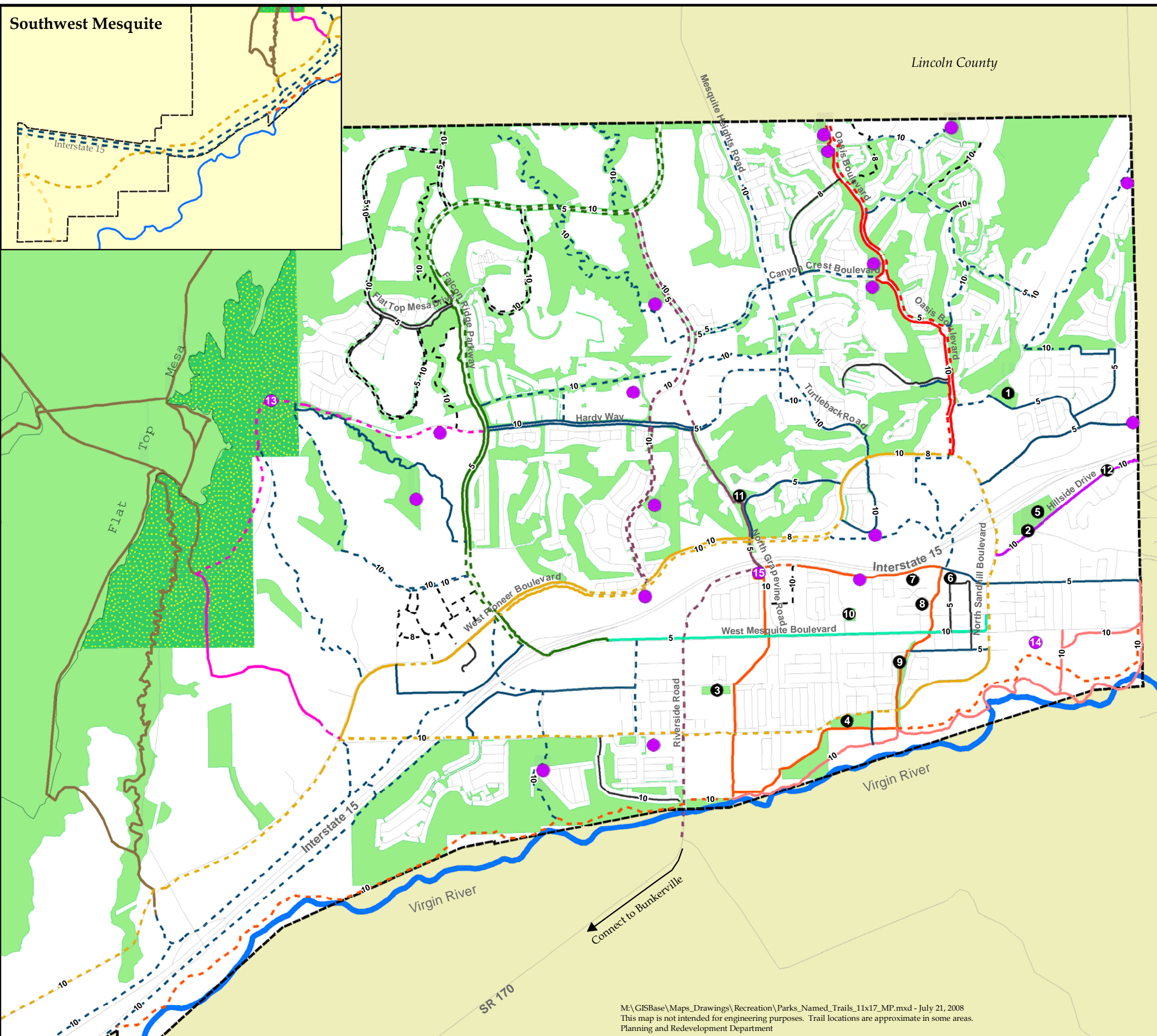


Southwest Mesquite

Lincoln County



Legend

Parks and Open Space

- Parks, Recreation and Open Space
 - Mesquite Regional Park (proposed)
 - Existing Public Park
 - Proposed Public Park
 - Existing Private Park (open to public)
 - Proposed Private Park (open to public)
- Numbered parks can be cross-referenced in Table 1-5

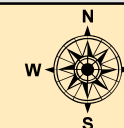
Trails

- Existing
- Proposed
- Neighborhood Trail
- Community Trail

Regional Trails

- Jackrabbit Trail
- Joshua Tree Trail
- Rattlesnake Trail
- Roadrunner Trail
- Sagebrush Trail
- Scorpion Trail
- Southwestern willow flycatcher Trail
- Virgin River chub Trail
- Willow Trail
- Woundfin Trail
- Yuma clapper rail Trail

1 inch equals 0.5 miles



City of Mesquite Master Plan
Parks, Trails and Open Space

August 26, 2008

Figure 1-1

Page 17

M:\GISBase\Maps_Drawings\Recreation\Parks_Named_Trails_11x17_MP.mxd - July 21, 2008
This map is not intended for engineering purposes. Trail locations are approximate in some areas.
Planning and Redevelopment Department