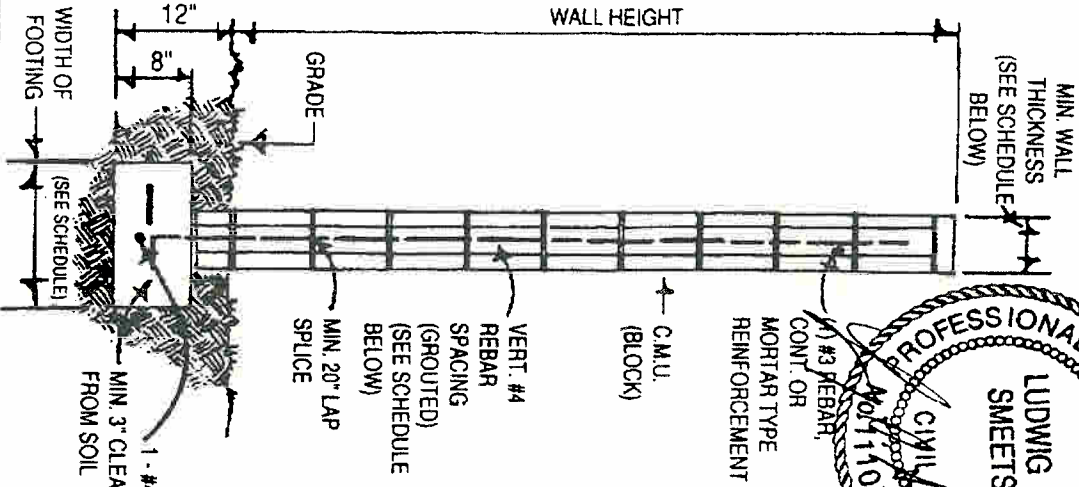


**REGULAR FOOTING**



WALL HEIGHT	MIN. WALL THICKNESS	REBAR SPACING	WIDTH OF FOOTING
4' - 0"	6"	48"	12"
5' - 0"	6"	48"	14"
6' - 0"	6"	48"	16"
7' - 0"	8"	32"	20"
8' - 0"	8"	32"	22"

**NOTES:**

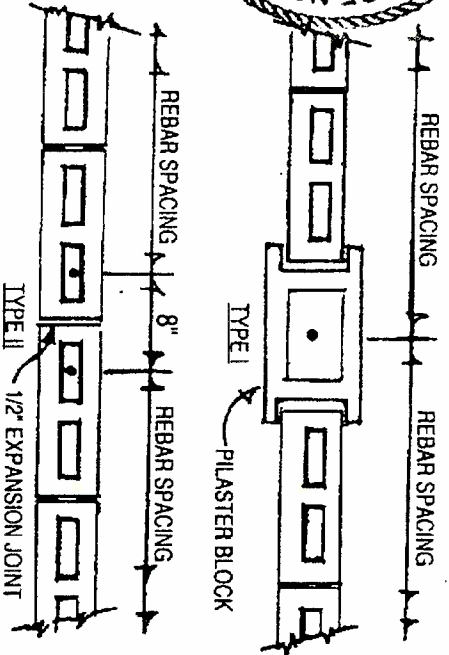
1. **A GOOD CONCRETE MIXTURE** for footings is by volume: 1 part portland cement, 2.75 parts sand, 4 parts gravel not larger than 1.5 inches, and just enough water to make the mixture "mushy" and workable, but not "soupy." The water content should not be more than 7.5 gallons per sack of cement for the above mix. Where salts are present in the soil, Type V cement is required.

**A GOOD MORTAR MIXTURE** should be in proportions of 1 part portland cement, 1/3 part lime (hydrated), and 3 parts sand. The water content should be according to absorption and suction ability to assure normal flow and spreading with a trowel.

**A GOOD GROUT MIXTURE** should be composed by volume of 1 part portland cement, 2 parts sand, and 1 part pea gravel. Sufficient water shall be added to produce consistency for pouring without segregation.

2. **UNSUPPORTED ENDS OF WALLS** shall terminate in a reinforced pilaster column or the end cell shall be reinforced and grouted solid.

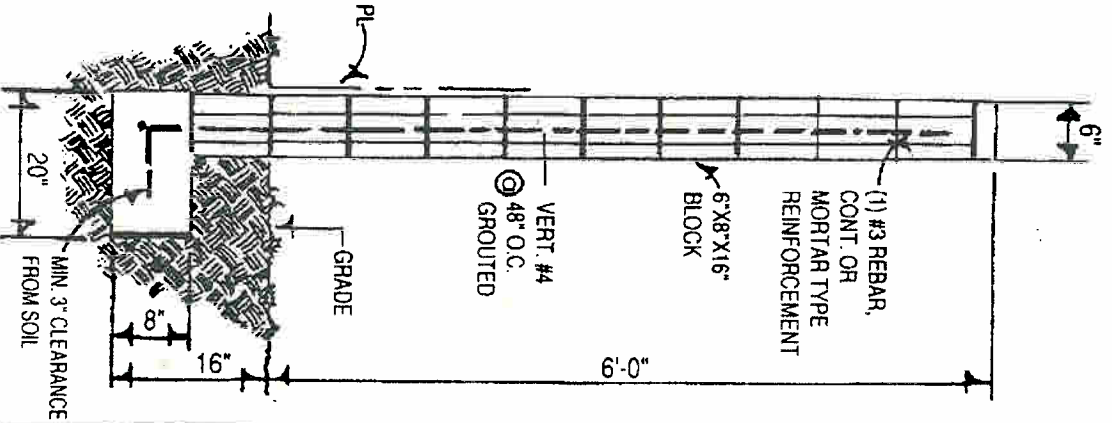
3. **THIS WALL** has been designed to be supported by soil that develops 1500 p.s.f. bearing capacity. Where a location has soil that cannot support this design or has special soil conditions, this design cannot be used. Contact your local Building Department.



**EXPANSION JOINT DETAILS**

Expansion Joints Recommended From 30' to 50' Intervals, Plans For Intervals Greater Than 100' Shall Be Accompanied By Engineering Calc's.

**ECCENTRIC FOOTING**



**INSPECTIONS REQUIRED:**

1. Footing inspection prior to placing concrete.
2. Wall steel inspection prior to grouting.
3. Final inspection.

**REGULAR C.M.U. AND MORTARLESS HEADJOINT MASONRY WALL**

